



**Canuck  
Place**

CHILDREN'S HOSPICE  
celebrating 30 years 



## Founder Betty Davies reflects on 30 years of care

"As I reflect on three decades of care at Canuck Place, I'm reminded of the quote from Jean-Baptiste Massieu, that 'gratitude is a memory of the heart.' I am grateful to so many for being part of establishing and developing Canuck Place during the past 30 years.

professional competence and our full humanity in facing life's most daunting challenges.

"These elements have sustained Canuck Place's first three decades and will carry it forward for the next 30."

"From our initial discussions in 1988, Brenda Eng and I knew that establishing a children's hospice would require a true community—individuals from many disciplines and, most importantly, parents with experience navigating caring for a child with a complex illness.

"When I reflect on 30 years of Canuck Place care, three elements make it special:

**"Sharing a vision:** Our purpose was never to 'fix problems,' but to focus on strengthening what works well and affirming that families matter. We see each person's strengths—what they are, rather than what they are not. As Henry David Thoreau said, "It's not what you look at that matters, it's what you see."

**"Accepting uncertainty:** Staff and volunteers understand that uncertainty isn't something to avoid but an inherent dimension to this work. Places of serious illness and death are often places of greater wholeness, places where we discover what matters.

**"Balancing professional and personal:** Families are best served when we engage both our



Betty Davies and Brenda Eng,  
Canuck Place Founders

### Grateful for Canuck Place founders:

Brenda Eng	Arthur Griffiths
Betty Davies	Canuck for Kids Fund
Lois Youngson	Canucks Alumni
George Jarvis	Ian Haysom

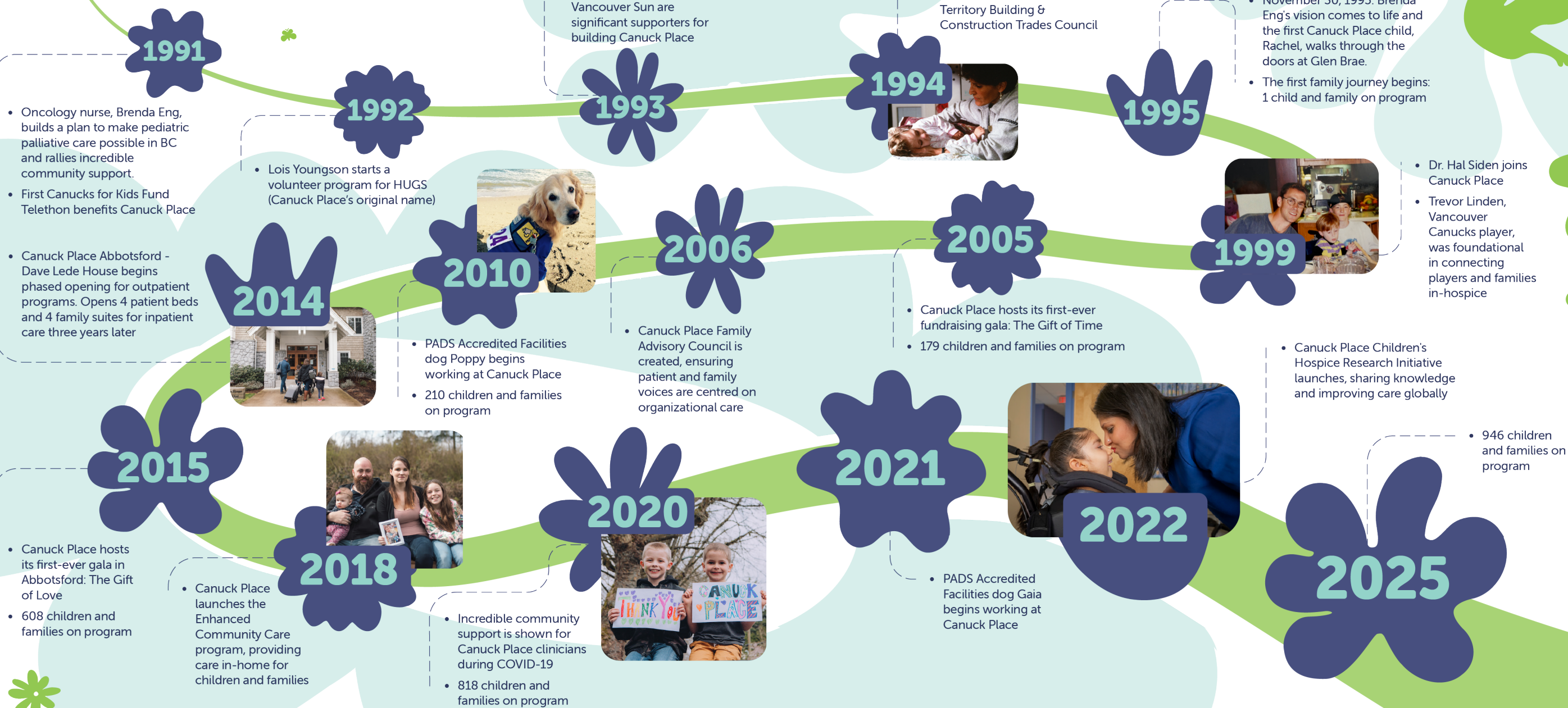
“**Children and families  
continue to make us humble  
and teach us. Let us always show  
the best of our humanity and be  
kinder than necessary.**”

- BRENDA ENG, CANUCK PLACE FOUNDER

Canuck Place Children's Hospice acknowledges

with gratitude that our work takes place on the traditional and unceded lands of the Coast Salish Peoples, including the territories of the šxʷməθkʷəy̓əmaʔt̓ təməxʷ (Musqueam), Skwxwú7mesh-ulh Temíxw (Squamish), səliłwətaʔt̓ təməxʷ (Tsleil-Waututh) Nations, Stó:lō (Stolo) people, the Semá:th (Sumas) and Mathxwí (Matsqui) First Nations.

# How Canuck Place came to be





## A legacy of love and care

This year, we celebrate a truly remarkable milestone—30 years of compassionate, world-leading pediatric palliative care. We honour the dedicated staff, volunteers, donors, and partners who have helped build something special: a place where children can be children, where families find strength and respite, and hope lives on—even in the most difficult moments.

Among those who have helped shape this legacy is Camara van Breemen, Nurse Practitioner Lead, and Director of

Community Care and Provincial Outreach. Since the day our doors opened, Camara has been a visionary leader and tireless family advocate. She has driven innovation, ensuring children and families receive compassionate, specialized care—when and where they need it.

Camara pioneered the Enhanced Community Care program, supporting families in choosing where

they receive care across BC and the Yukon. She adapted the adult serious illness tool and created the Serious Illness Conversation Guide – Pediatrics®, transforming how clinicians across Canada communicate with families navigating their child's serious illness.

Through her expertise and mentorship, Camara has trained countless healthcare providers and continues to shape the field globally. She is a published clinician, University of British Columbia clinical instructor, and active international volunteer and faculty with Two Worlds Cancer Collaboration, sharing her knowledge with pediatric care teams in low-resourced countries.

Camara's deep commitment to children, families, and the Canuck Place team has left an indelible mark on our organization. Her legacy is one of courage, compassion, and community—helping families live fully with the time they have left together.

We are deeply grateful for Camara's extraordinary 30 years of service.

Camara van Breemen and Gaia, PADS Accredited Facilities Dog



## 30 year volunteers—a work of heart

### Cora Boecker

Cora has been a joyful, generous presence at Canuck Place for three decades. From shaping the volunteer program to supporting events and care at both hospices, Cora's dedication has left a lasting impact.



contributed 13,941  
hours of support

*"After 30 years of volunteering at Canuck Place, what has stayed with me most is the quiet, powerful magic found in the simplest moments—moments that can become treasured memories for a family."*

*"One memory I hold close is sitting at the bedside of a little boy in his final days, gently blowing bubbles for him. It was such a small act—but there was something deeply peaceful and tender about it. That moment was about being present, offering comfort, and creating space for beauty, even in the hardest times."*

*"Canuck Place is where that kind of magic happens every day. It's where love, care, and presence turn fleeting moments into lifelong memories."*



Combined 60 years of volunteering at Canuck Place: Merle Rector and Cora Boecker

### Merle Rector

Merle is a cherished and dedicated member of our volunteer team. She always brings the brightest, happiest energy. Merle and her husband Barry lost their daughter Heidi before Canuck Place opened its doors in 1995. The courage to share their personal experience was instrumental in helping Canuck Place founder, Brenda Eng, secure funding to build Canuck Place.

*"Receiving training as official volunteers at Canuck Place in 1995, gave my husband and I great pleasure to ensure Heidi's legacy was one of gratitude in serving others."*

*"Little did I know that being involved as a volunteer would completely change my life. While I felt the need to serve, in fact my life has been enriched in countless ways thanks to the children and families and the incredible staff I've had the pleasure of spending time with over the years."*



## Families guiding care



**MEAGAN COLENUTT**  
FAC Chair

### A message from the Family Advisory Council Chair

I send warm greetings to the beautiful community that supports children and families at Canuck Place. As the Chair of the Family Advisory Council (FAC), I want to share my gratitude on behalf of the FAC for ensuring pediatric palliative care is available to families across BC and the Yukon. I know firsthand how Canuck Place care can make a difference for families. My

daughter Faith passed away in 2018 and participating in the FAC is one of the many ways I honour her legacy and support families like mine who require services from Canuck Place.

This past year, the FAC provided guidance for Canuck Place to improve best practices in care, improving quality and safety of care, supported the development of new policies and services, and enhanced the experiences of all families at Canuck Place. The FAC also welcomed the first Canuck Place sibling to the council, enhancing the robust lived and living experiences. Angela Uncles, Canuck Place parent who served as a council member and FAC Chair completed her term—and we thank her for sharing her living experiences, wisdom, and leadership.

Thank you to our donor community for making this comprehensive care possible. From my family and all the FAC members, thank you for supporting our voices in the care of our children.

**MEAGAN COLENUTT**  
Chair, Family Advisory Council

## FAMILY ADVISORY COUNCIL (FAC)

The FAC plays an active role in shaping Canuck Place policies by offering valuable guidance and insights from patient families. Through ongoing collaboration, we listen, respond, and work alongside families in real time to enhance the care we provide. Canuck Place is grateful for the wisdom and lived experience of our FAC members.

**Meagan Colenutt (Chair)**

**Marion Fernandez (Vice Chair)**

**Barbra Mohan (BoD Representative)**

**Pooja Dixit**

**Joe Goodings**

**Chris Hall**

**Hollie Hall**

**Grace Hobby**

**Huamei Kang**

**Riki Lawson**

**Kerena Letcher**

**Angela Uncles**

## 30 Years of family-centred care



**DENISE PRAILL**  
Chief Executive Officer

### A message from the Board Chair and CEO

Children at Canuck Place are boundless in their spirit and possess an unguarded curiosity regardless of their condition or disease. For over 30 years, our donor community has supported the pediatric palliative program delivered by Canuck Place for children with life-threatening illnesses and their families in BC and the Yukon. Families face incredible adversity and difficulty when their child is diagnosed, and their illness impacts the entire family. On average, a child is on our program for six years and their families for a further three years in grief and bereavement care, and the quality of living is vital in that period. We want you to know that children and families experience the difference our donors make.

Your gifts help Canuck Place care for terminally-ill children, as well as supporting families to make the most of their finite time together. There are more families that need support as they navigate serious illness with their child—and your continued kindness and generosity ensures they will receive the care they need.

At the heart of pediatric palliative care is a desire to make difficult times easier and Canuck Place is committed to walking with families in love and dignity as they face unimaginable circumstances. Thank you for being there with us!

### A FAMILY ENGAGEMENT FRAMEWORK

that supports partnership with families for the purpose of improving care and services provided by Canuck Place

**+56%**

**INCREASE IN**  
children and families on program over the last decade

**946**

**CHILDREN AND FAMILIES ON PROGRAM**

**4,126**

**FAMILY MEMBERS**  
staying in our family suite accommodations for medical respite



**CLINICAL TRAINEES**  
including: medical residents, fellows, student nurses, and Research Initiative



**RECREATION THERAPY SESSIONS**  
for 3,326 children and family attendees



**COUNSELLING SESSIONS**  
for children and families to support mental health through challenging circumstances



**COMMUNITY-BASED CARE CONSULTATIONS**  
including 24-hour Clinical Care Line, in-hospital, in-home, and virtual care



**DR. HAL SIDEN**  
MD, MHSc, FRCP Medical Director

## Care for the whole human being

### A message from our Clinical Program Leaders

Thank you for supporting the Canuck Place program and our team's commitment to providing care for all children 0–19 in BC and the Yukon with life-threatening illnesses. The goal of the Canuck Place program is to support quality of life and reduce suffering for infants, children and youth and their families, and provide specialized pediatric palliative care that understands their values and beliefs and meets them where they are.

At Canuck Place, we care for the whole human being, and we value collaboration and partnership with children and families to understand their unique needs while they face uncertainty and challenging circumstances.

Pediatric palliative care is delivered by our talented team of nurses, physicians, counsellors, and recreation and music therapists. But we don't do this work alone. We share our gratitude that you also join our goal to reach every family caring for a child living with a life-threatening illness—so they have the care where and when they need it.



**KRISTINA BOYER**  
RN, MScA Executive Director, Clinical Operations & Quality

## Research to improve care

### A message from the Scientific Director

The Canuck Place Research Initiative (Research Initiative) collaborates with a national, interdisciplinary network of clinicians and researchers. As a global leader in pediatric palliative care, the Research Initiative is positioned to generate new knowledge and mobilize it with clinicians and researchers to benefit children and families confronted with fragility, uncertainty, grief, and loss.

Their focus is on longitudinal studies of children with life-threatening illnesses, epidemiological studies of children with these conditions, and outcomes of care. In partnership with Canuck Place clinicians, the Research Initiative prioritizes the meaningful involvement of families in research, including team members: Parent Partner, Candice Barrans, and Family Liaison and Parent Partner, Laesa Kim. The Research Initiative team was joined by 12 research trainees with a focus on topics like how pain and symptoms are assessed and managed, how families are impacted by their child's health condition, and how non-verbal children with neurological impairment experience care.

Thank you for your investment in pediatric palliative care research that benefits children and families everywhere.



**DR. HAL SIDEN, MD, MHSc, FRCP**  
Scientific Director, CPCH Research Initiative



**CORE CANUCK PLACE RESEARCH INITIATIVE PROJECTS**



**NEWSLETTERS PUBLISHED**  
to a global pediatric palliative care audience on research trends



**PEDIATRIC PALLIATIVE CARE PRESENTATIONS**  
by Canuck Place clinicians and Research Initiative to provincial, national, and global audiences for the benefit of seriously-ill children everywhere

# Finite Days. Infinite Love.

Life is finite. And whether our time is a little longer—or all too short—what matters most is making memories we can carry for a lifetime.

What if you only had one more outing as a family? How would you spend that time? With your generosity we help families cherish the time they have left together.

A full life has many meaningful moments, and we believe the shortest lives should be the fullest of them all. Together, we support families in living the end of life as fully as the beginning.

## Canuck Place Family Journey



When children living with life-threatening illnesses and their families come to Canuck Place, the end of the story is sometimes known, but the journey to get there has yet to be written. With your support, we ensure the rest of that story is the very best it can be.

One family's pathway of care



# Putting families at the heart of everything we do

This year, we embedded family engagement into the fabric of our organization through a comprehensive Family Engagement Framework and Toolkit.

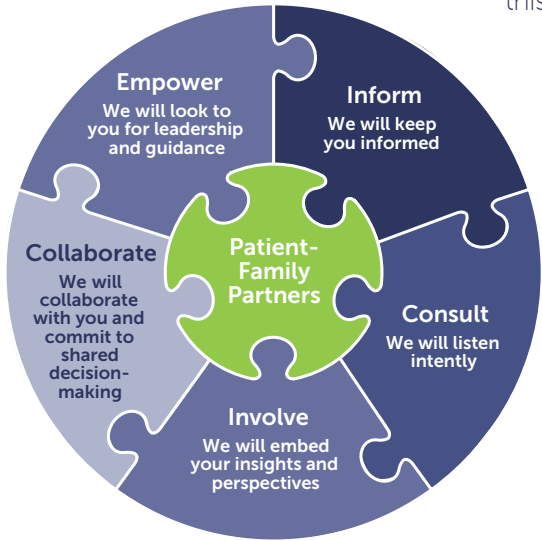
Our vision is clear: ensure consistent, safe, and respectful engagement that fully represents families' diverse perspectives and insights that support improved care for children in pediatric palliative care. This framework creates authentic partnerships with families to move beyond being care recipients to becoming collaborators and co-designers of care and services. We're committed to hearing, valuing, and integrating family voices.

Family engagement takes place throughout our entire organization—from leadership decisions to direct care. At the Board level, a family member is represented in a Director role and is nominated by the Family Advisory Council, a sub-committee of the board.

This ensures family perspectives shape strategic direction, program planning, research priorities, and care decisions. Families also choose how and when to share their stories, supported to ensure safe, meaningful engagement.

The Family Engagement Framework provides staff with practical resources for consistent and respectful interactions. A regular feedback loop with families ensures the organization understands where improvements need to be made.

Your generous donations help make this comprehensive family engagement possible. When you support Canuck Place, you're investing in a model where families are partners in creating the best possible care. Thank you for making this vision a reality.



ENGAGING WITH PURPOSE AT CANUCK PLACE





Charlie and Wesley Hodson, Canuck Place Family

## A safe haven for families

When the Hodson family first arrived at Canuck Place, they carried not only the weight of their child's complex medical needs but also years of exclusion, uncertainty, and exhaustion. Their son, Wesley, who lives with a rare condition called Smith-Magenis Syndrome, is medically fragile, behaviorally unique, and full of personality. He is expressive, funny, and full of life—an adoring fan of Baby Yoda and The Office.

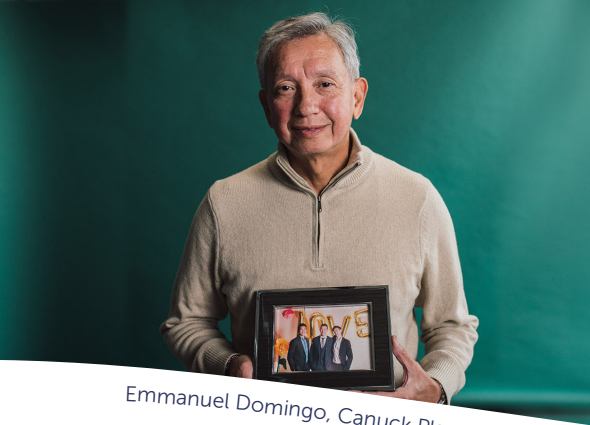
Throughout his life, he had often been excluded or misunderstood. His parents Karyn and Wes were unsure if Canuck Place could meet his intensive care needs—or truly embrace his vibrant personality. But from the very beginning, the Canuck Place team welcomed him with open arms.

Canuck Place became the family's second home, a place where Wesley was not only cared for but celebrated. He received expert

medical care and compassionate, individualized attention. The impact of Canuck Place care extends beyond Wesley. The whole family receives counselling, and their medical respite stays support much needed rest and renewal. His siblings—who know how to manage his G-tube, medications, and daily care—are given space to enjoy moments of connection rather than responsibility.

Though he is considered “non-verbal,” Wesley makes his needs and feelings known with clarity and charm. At Canuck Place, he is seen, understood, and loved for exactly who he is.

“We just want him to be happy. We know he may never be healthy like others, but he deserves joy and love. Canuck Place has given us something no one else has—peace of mind, moments of normalcy, and a chance to be a family again,” says Karyn.



Emmanuel Domingo, Canuck Place Dad



Fed Angel, and Federico Angel Sr., Canuck Place Family

## Meaning and connection through grief

For Canuck Place fathers Emmanuel Domingo and Fed Angel, Father's Day brings both gratitude and reflection. Each has faced unimaginable loss, and each found comfort, care, and connection through Canuck Place.

Emmanuel's son Kristian died of cancer eight years ago. The Domingo family turned to Canuck Place for medical respite and pain management during Kristian's final months. At first, Emmanuel struggled with the idea of hospice. “It felt like giving up hope,” he shared. But in time, he recognized that Canuck Place gave their family something greater—comfort, dignity, and unwavering support.

“Even after Kristian passed, Canuck Place never let go,” Emmanuel says. “They reached out gently, offering help. I'm grateful, not just for what they gave Kristian, but what they gave all of us.”

Fed Angel's son, Alejo, was diagnosed with a rare cancer at just two weeks old. He passed away at five weeks. During that short but meaningful time, Canuck Place provided a place for the family to be fully present with their beautiful son. “We got to just be his parents,” Fed says.

Fed describes being a Canuck Place dad as joining a “brotherhood you never wanted to be part of,” but one built on shared understanding. His own father, who also lost a son, calls Canuck Place “an umbrella”—a shelter from the storm of grief.

For both families, Canuck Place has been a source of healing and hope, helping them honour their children by embracing love, connection, and the meaning found in joyful moments—even amidst sorrow.





Hope, Ella, Andrew, and Ben Cholette, Canuck Place Family

## A journey of love and care

Hope and Ben Cholette spent the first month of their son Jack's life confused and heartbroken. Jack was born with Trisomy 5P, a genetic condition so rare that the medical community had almost no information about it. Faced with the toughest decision of their lives, Hope and Ben lovingly considered all their options and made the brave choice for Jack's quality of life over quantity. No more poking and prodding, no more tests. They brought Jack home for Christmas. This was the beginning of their family's motto 'follow Jack's path', that guided them for 11 years.

Their first encounter with Canuck Place offered a spark of hope. Canuck Place Medical Director Dr. Hal Siden spoke with optimism about Jack's potential. "It felt like someone was finally on our side," says Hope.

Years later, the family embraced Canuck Place as a vital part of their lives. Respite stays at Canuck

Place Abbotsford—Dave Lede House, affectionately known to their family as "Camp Canuck Place", became a treasured time for rest, connection, and joy. Jack loved his visits: music therapy, art, pet visits, and cuddles with his favourite nurse, Karen. His medical needs were expertly managed, giving the family peace and quality time together.

One unforgettable moment came on Jack's 8th birthday. A lifelong Wiggles fan, Jack saw them perform live and the Canuck Place recreation therapy team even threw him a special birthday party that same day.

Jack passed away at age 11 at Canuck Place, surrounded by love. In their time together, the Cholette family made lasting memories by following Jack's path.

"The hardest part of losing your child is knowing there will be no more photos, crafts, or handprints," says Hope. "I cherish every memento, and I am beyond grateful."



The Rempels, Canuck Place Family with Mary Coleman, Canuck Place Clinical Practice Leader, Bereavement

## Care that reaches across the province

When Jenn and Matt Rempel's son Tristan was diagnosed with ependymoma brain cancer at just 14 months old, they were devastated. Living in Northern BC, they faced the added challenge of accessing specialized pediatric care far from home. Canuck Place became a vital lifeline.

Through community-based care, Canuck Place offers 24/7 clinical consultation from nurses and physicians and counselling services via phone or virtual care, giving families immediate access to medical advice and reassurance during critical moments. Whether it's managing pain and symptoms, adjusting medication, or providing spiritual and emotional support during challenging times, the team at Canuck Place ensures families like the Rempels receive compassionate care wherever they are.

"Tristan was full of life. He loved adventures, playing video games with his siblings, and imitating funny things he saw, like people snoring. He made every moment brighter," says Jenn.

Canuck Place supported the Rempel family with in-home nursing care, virtual consultations, and emotional support. Nurses helped manage Tristan's pain and symptoms, provided medication guidance, and coordinated local care. "We used the 24-Hour Clinical Care Line often," says Jenn. "The nurses reassured us during the most difficult moments."

Emotional and spiritual support were also essential. Each of Tristan's siblings received grief counselling, and joined Canuck Place sibling bereavement groups. "They were guided through their grief in ways that helped them feel less alone," says Jenn.

Your support drives innovation.  
For 30 years, you've helped  
us learn, grow, and lead in  
pediatric palliative care.

## Leading conversations with compassion and care

Canuck Place is a leader in pediatric palliative care, advancing compassionate communication through the Serious Illness Conversation Guide – Pediatrics® (SICG-Peds®). Adapted by Canuck Place clinicians in 2018 from an adult tool developed by Ariadne Labs at Harvard University, the guide supports clinicians in engaging parents as partners in their child's care through open-ended questions, listening, and anticipatory guidance.

Since its launch, Canuck Place has trained 931 clinicians across Canada and more than 150 internationally, including in Southeast Asia and India. The training equips healthcare professionals to navigate complex conversations with empathy, placing family values at the center of care planning.

In a first-of-its-kind innovation, Canuck Place included four bereaved parents to the SICG-Peds® faculty training team, including Canuck Place Mom, Lee Renaud. Their lived experience adds essential insight into what compassionate

communication truly means when caring for a seriously-ill child.

"The SICG-Peds® training reduces harm; the harm that can be caused unintentionally by medical professionals when they are so focused on prognosis and treatment," says Lee. "Sometimes, they lose sight of the humanity. Input from moms like me adds the perspective of lived experience and adds the humanity back into caring for seriously-ill children so the family's voice is not lost, which can easily happen; it's very easy to feel like you don't have a voice at the table."

Canuck Place expanded its leadership by developing the Serious Illness Conversation Guide–Neonatal®, tailored to the unique care needs of families in the Neonatal Intensive Care Unit.

The Renauds, Canuck Place Family



Canuck Place has trained  
931 clinicians nationally and globally on  
the Serious Illness Conversation Guide  
- Pediatrics® since 2018



# Parents as partners: transforming pediatric palliative care research

When non-verbal children with serious illness experience pain, how do they tell us where it hurts? This critical question drives groundbreaking research at the Canuck Place Children’s Hospice Research Initiative (Research Initiative), where your support is improving pediatric palliative care through an innovative research model that prioritizes meaningful engagement with families.

The Research Initiative employs Candice Barrans, Parent Partner and Laesa Kim, Family Liaison as integral team members. They bring an invaluable perspective from their lived experience caring for their children with complex medical needs.

Candice connects academic research with everyday family experiences, co-leading parent journal clubs that break down complex

Laesa Kim, Family Liaison and Candice Barrans, Parent Partner, Research Initiative



studies for other families. These sessions create a meaningful space where parents are valued as knowledgeable partners, drawing on their experience navigating the medical system.

As Family Liaison, Laesa ensures research is driven by what Canuck Place families experience. She helps shape study design, leads interviews, and co-investigates research projects. “When I’ve interviewed families, I can genuinely say, ‘I get that,’” she explains, highlighting how this shared understanding creates deeper connections and richer insights.

Their work directly impacts one of the core six projects of the Research Initiative, the Pain and Irritability of Unknown Origin (PIUO) study, developing evidence-based guidelines for symptoms that are difficult to assess. Your support makes this innovative research model possible—partnering with families as knowledge co-creators and ensuring that studies truly serve those who need them most.



Gail Andrews, Research Manager, Research Initiative, and Aahaana Bubbar, Canuck Place Child



Nadine Lusney, Clinical Nurse Specialist & Director of Clinical Knowledge, Practice and Innovation, with the Angels, Canuck Place Family

## Leading the way in pediatric advance care planning

When a child is seriously ill, difficult conversations about the future are essential. With your support, Canuck Place is co-leading the provincial pediatric Advance Care Planning (pACP) Project to improve how these conversations happen across BC and the Yukon.

Children receive care from many providers, and communication gaps can leave families overwhelmed. Canuck Place is helping bridge these gaps through partnerships with BC Children’s Hospital, BC Children’s & Women’s Hospitals Indigenous Health, ChildHealth BC, and Perinatal Services BC.

The pACP project is creating province-wide guidelines and training for meaningful, compassionate conversations and family partners help shape this work, ensuring their voices guide



Dr. Sonia Brar and Dr. Natasha Datoo, Canuck Place Physicians

## Celebrating our first Royal College fellowship graduate

In June 2025, Dr. Sonia Brar became the first physician to complete the Royal College Fellowship in Pediatric Palliative Medicine at Canuck Place—a historic milestone that strengthens our leadership in pediatric palliative care.

Canuck Place became only the second approved fellowship training site in Canada in 2022. Over two years, Dr. Brar trained across our full scope of care—from our Vancouver and Abbotsford hospices to community-based care in-home and in-hospital.

Drawn to Canuck Place’s innovative model, she shares, “this field is one of the few places in medicine where I feel like the most authentic version of myself.”

Dr. Brar’s graduation is a significant step forward in expanding specialized pediatric palliative care.

RESEARCH,  
KNOWLEDGE, &  
INNOVATION



Camara van Breemen, Canuck Place Nurse Practitioner Lead & Director, Community Care and Provincial Outreach in India

## Improving care globally

Canuck Place's impact reaches far beyond BC and the Yukon. As a global leader in pediatric palliative care, we share our expertise through the Children's Palliative Care Leadership Program—a partnership with Two Worlds Cancer Collaboration (TWCC).

This year-long program, hosted by TWCC's Sunflower Children's Network and the Hyderabad Centre for Palliative Care, trains emerging healthcare leaders across South and Southeast Asia, where pediatric palliative care resources are limited.

Canuck Place clinicians serve as international mentors alongside global experts, supporting professionals to improve care in their communities. Our participation reflects a deep commitment to ensuring compassionate, expert care for all children.

Thanks to your support, we are building sustainable pediatric palliative care systems and inspiring care that expands across borders and oceans.



Dr. Abby Rosenberg, Chief of Pediatric Palliative Care at Dana-Farber Cancer Institute & Associate Professor at Harvard Medical School.

## Learning from global leaders

In 2025, Canuck Place welcomed visiting scholar, Dr. Abby Rosenberg, Chief of Pediatric Palliative Care at Dana-Farber Cancer Institute and Associate Professor at Harvard Medical School.

Dr. Rosenberg shared her groundbreaking research on resilience, which stems from three sources: external supports like community and relationships, internal strengths such as optimism and grit, and existential resources including faith and memory-making.

"We discovered resilience is like a teeter totter," she explains. "Feeling connected, staying positive, managing stress, and having purpose all tip the scales."

Her work aligns with Canuck Place's holistic approach, showing resilience can be nurtured. Hosting renowned international experts like Dr. Rosenberg strengthens our role in shaping the future of pediatric palliative care.



## A mark of excellence and trust

In 2025, Canuck Place proudly achieved Imagine Canada Accreditation, joining a network of leading nonprofits committed to excellence, transparency, and strong governance. This national recognition reflects our organization-wide dedication to ethical fundraising, accountability, and operational integrity. Following a rigorous peer review, this prestigious accreditation confirms Canuck Place meets the highest standards—an honour that celebrates the exceptional work of our team and reinforces our reputation as a trusted leader in the charitable sector.



## Canuck Place receives Exemplary Standing from Accreditation Canada

In 2024, Canuck Place received the highest level of recognition from Accreditation Canada, awarded for our excellence in quality, safety, and care. This is the second time Canuck Place has achieved this distinction. This recognition reflects the dedication of the entire Canuck Place team and affirms our leadership in pediatric palliative care.

RESEARCH,  
KNOWLEDGE, &  
INNOVATION

### AWARDS AND RECOGNITION

2024 SUPPORTINGLINES®  
HIGH-PERFORMANCE  
CULTURE AWARD

2024 CANADIAN  
WORKPLACE WELL-BEING  
AWARDS, PRESENTED BY  
THE CANADIAN POSITIVE  
PSYCHOLOGY ASSOCIATION

2024 INNOVATIVE HR TEAM,  
CANADIAN HR REPORTER

2024 GREATER VANCOUVER  
BOARD OF TRADE – NON  
PROFIT OF THE YEAR

2024 VIBE AWARD WINNER  
IN THE CATEGORIES OF  
PARENTAL & PROFESSIONAL  
DEVELOPMENT BENEFITS

2024 WATERSTONE  
CANADA'S MOST ADMIRER  
CORPORATE CULTURE

2025 TOP 10 LEADERS IN  
PEOPLE STRATEGY AND  
WORKPLACE CULTURE –  
DIVERSITYCAN MAGAZINE



Every year, more families need Canuck Place care. Your support helps us meet this growing demand with compassion and clinical excellence.

## Choices in care

The need for pediatric palliative care is growing as more children live longer with complex, life-threatening illnesses. Canuck Place is seeing increased demand for specialized care for the whole family. Your support ensures families have access to compassionate care when and where they need it—in our hospices, and community-based care in-hospital and in-home. Giving families the choice of setting honours their needs, values, and comfort, allowing them to focus on what matters most—time together.



622

### CALLS

to the Canuck Place 24-Hour Clinical Care Line supporting families across BC and the Yukon

1,069

### IN-HOME VISITS

by nurses, nurse practitioners, and physicians since 2018, providing choices for the place of care

+6%

### INCREASE IN

community-based care consultations in-home, in-hospital, and virtual care



# Bereavement care model

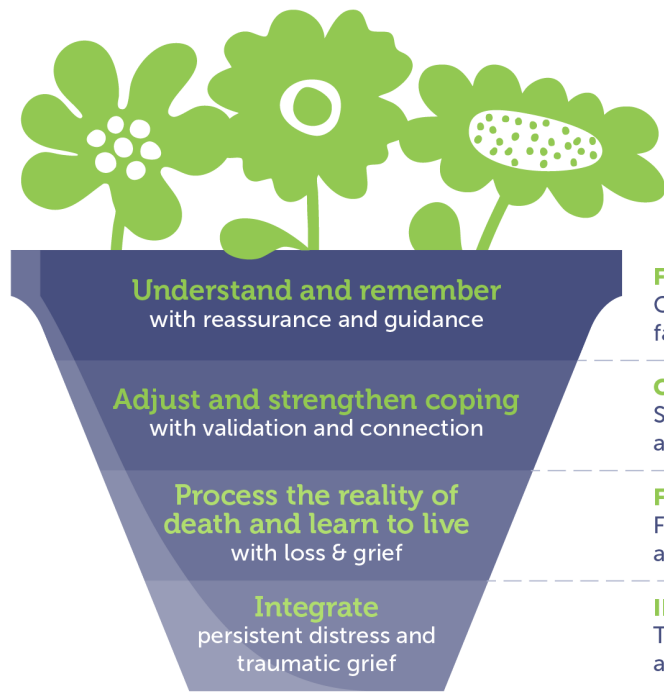
Canuck Place is addressing the growing demand for specialized bereavement care with the development of a needs-based bereavement model that will help fill critical gaps in the healthcare system. Rooted in the belief that families have an innate capacity to grow resilience, the model will offer personalized support that reflects each family's unique journey to remember their child, process loss, and

integrate their grief within the context of their values, beliefs, and culture.

Grief is a dynamic process that families tend to throughout their lives and this model offers four levels of support, ranging from foundational grief resources to intensive therapeutic care. Services are tailored for parents, siblings, and caregivers, honouring diverse experiences of grief.



**INCREASE IN**  
counselling sessions for children and families to support mental health through challenging circumstances



- FOUNDATIONAL:** Compassionate support to acknowledge individual, family, and community grief responses
- CORE:** Structured child & family support to help with adaption, resilience, and connection with others
- FOCUSED:** Formal counselling when daily life and functioning are impacted in a substantial way
- INTENSIVE:** Therapeutic interventions for complex, persistent, and traumatic grief reactions

COMMUNITY OF SUPPORT



The Braun family with Michaela Wallis, Canuck Place Music Therapist



Michaela Wallis, Canuck Place Music Therapist with Atticus Braun, Canuck Place Child

## Kids need to be kids

Education, recreation and music therapies are crucial components of pediatric palliative care as they attend to the universal need to learn, play and create. These key programs at Canuck Place promote coping skills, reduce isolation, facilitate social interaction, emotional expression, pain management, and create positive memories, ultimately enhancing the child's and family's quality of life. The demand for these programs continues to expand.



**INCREASE IN**  
Recreation Therapy sessions for children and families



**INCREASE IN**  
Music Therapy sessions, in-hospice, in-home, and in-hospital

GROWING NEED

44%

Fraser Health

21%

Vancouver Coastal Health

12%

Vancouver Island Health

13%

Interior Health

8%

Northern Health

2%

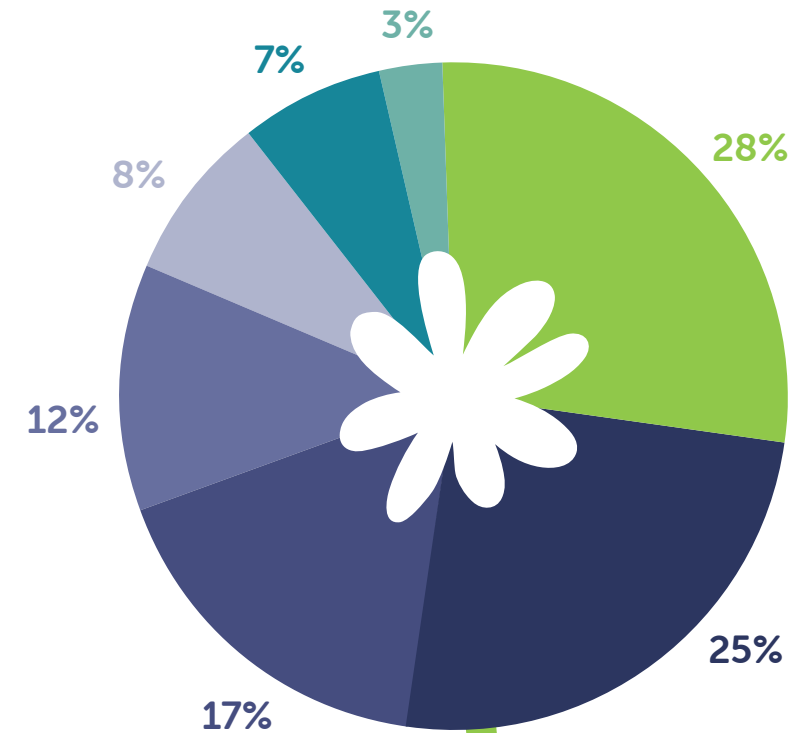
Yukon/Out of Province

946

CHILDREN AND FAMILIES ON PROGRAM

## Canuck Place specialized care

Canuck Place clinicians care for over 240 different conditions and diseases.



+44%

INCREASE IN prenatal referrals

INCREASE IN THE 0-2 AGE CATEGORY

- Central Nervous System
- Congenital/Chromosomal/Multi-Organ
- Cancer
- Cardiopulmonary
- Metabolic/Biochemical
- Neuromuscular
- Immunological-Infections

You invest in care that matters.  
For 30 years, you have helped  
children and families live with  
dignity, comfort, and support.

## Report from the Finance & Audit Committee

It is my pleasure to present the 2024–25 report from the Finance & Audit Committee for Canuck Place Children's Hospice (CPCH). We are grateful to our donors, government partners, and our staff and volunteers for making safe, high-quality, and sustainable care possible for children and families. Pediatric palliative care is provided by Canuck Place in BC and the Yukon in-hospices, in-hospitals, in-homes, and through virtual care.

This fiscal year resulted in a deficiency of revenue over expenses of \$(333)K for CPCH. With your help, we were able to maintain fundraising levels at \$10M, spending \$8.3M this year to provide care for all the children and families who need us most, and prudently carrying forward \$1.7M for use next fiscal. With the continued support of the Province of BC and donors, and stewardship of our cash and investment balances, revenues remain strong, totalling \$26M. Offsetting those revenues, expenses increased to over \$26.3M. Economically and politically, this year has been a challenging one. CPCH is committed to strong management of operations, accountability, and transparency with donors. Net assets allow CPCH to continue to provide these key services and investments in the CPCH Foundation will be a bridge to any funding gaps and provide stability in the current climate of financial uncertainty.

As our planned implementation of the Electronic Medical Record (EMR) system continues and the clinical team adjusts to meet the growing need, there will be a reduction in our deferred revenue contributions being reported in our statement of financial position. We will continue the EMR project and capital improvements for our hospice in Vancouver over the next 6–24 months. Deferred revenues are protected and provide CPCH with investment income while being held.

In closing, please know we are committed to working closely with the Province of BC, our health system, community partners, and our generous donors, while welcoming new partners to build a sustainable future for CPCH ensuring we are here for our children and families for many years to come.

*Tom Webster*

**TOM WEBSTER**  
Treasurer and  
Finance & Audit  
Committee Chair,  
CPCH Board of  
Directors



Please see our full audited financial statements on our website at [www.canuckplace.org](http://www.canuckplace.org)



## 2024-25 Society - statement of financial position

### STATEMENT OF FINANCIAL POSITION

31 MAR 2025

31 MAR 2024

ASSETS		
Current assets	10,485,213	6,220,972
Investments	14,437,065	19,652,551
Capital assets	11,505,280	11,790,357
<b>TOTAL ASSETS</b>	<b>\$ 36,427,558</b>	<b>\$ 37,663,880</b>
LIABILITIES + NET ASSETS		
Current liabilities	3,595,086	1,901,420
Deferred contributions	7,732,287	9,924,549
Deferred capital contributions	8,216,142	8,620,730
Net assets	16,884,043	17,217,181
<b>TOTAL LIABILITIES + NET ASSETS</b>	<b>\$ 36,427,558</b>	<b>\$ 37,663,880</b>

### STATEMENT OF OPERATIONS

31 MAR 2025

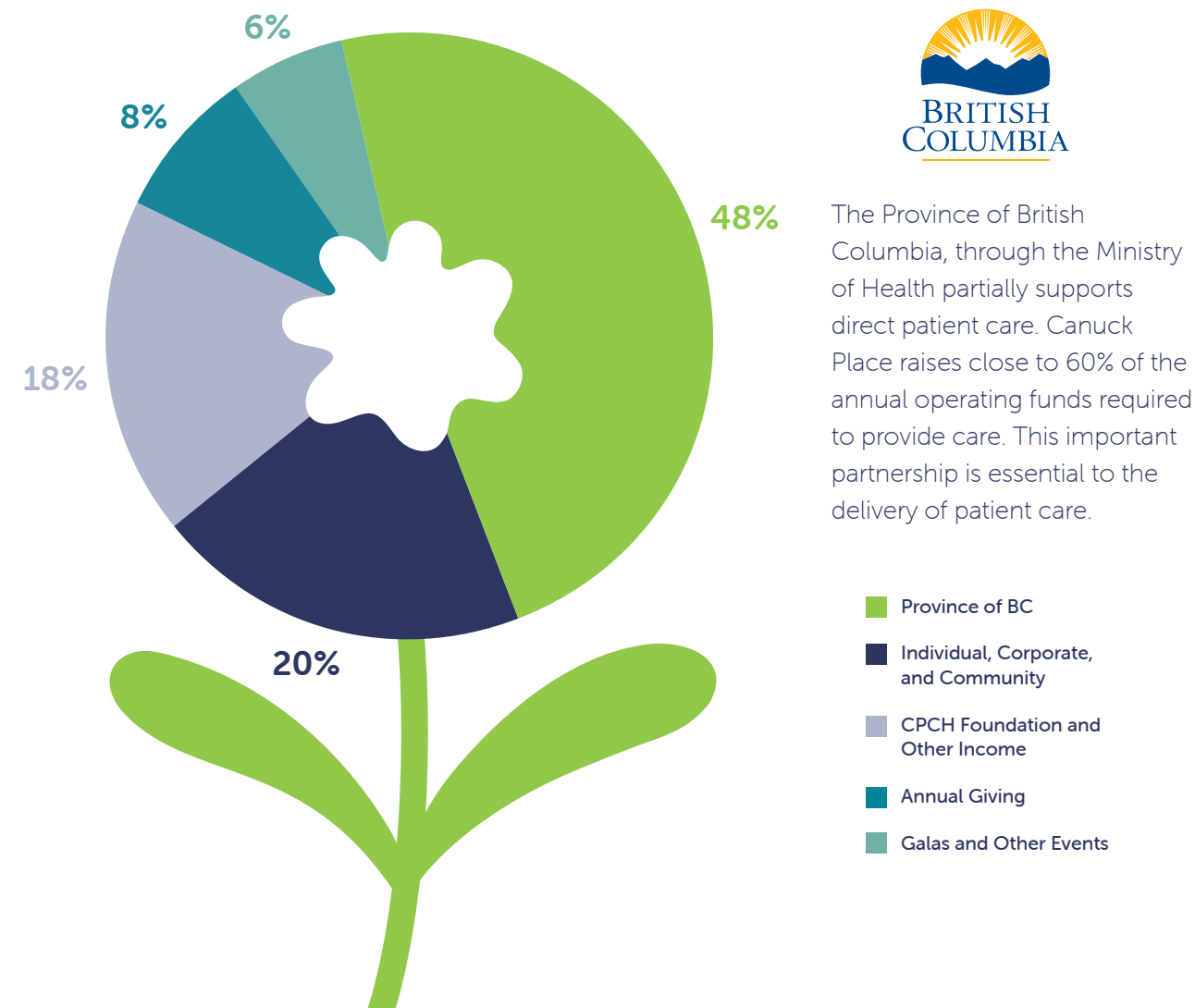
31 MAR 2024

REVENUE		
Donations and fundraising	8,312,037	10,031,417
Province of BC — Operating funding	12,443,942	8,840,394
Canuck Place Children's Hospice Foundation	3,200,000	2,260,000
Investment and other income	1,589,237	1,575,796
Amortization of deferred capital contributions	436,787	473,663
<b>TOTAL REVENUE</b>	<b>\$ 25,982,003</b>	<b>\$ 23,181,270</b>
EXPENSES		
Staffing costs	18,622,784	16,309,692
Development, communications and marketing	2,335,498	2,434,782
Clinical program	1,943,572	1,727,585
Central services	1,565,658	1,488,995
Amortization	632,908	637,917
Technology projects	719,307	374,216
Innovation, research, and knowledge translation	495,414	208,083
<b>TOTAL EXPENSES</b>	<b>26,315,141</b>	<b>23,181,270</b>
<b>DEFICIT OF REVENUE OVER EXPENSES</b>	<b>\$ (333,138)</b>	<b>\$ -</b>

Please see our full audited Society financial statements on our website at [canuckplace.org](https://canuckplace.org)

## Sources of funding

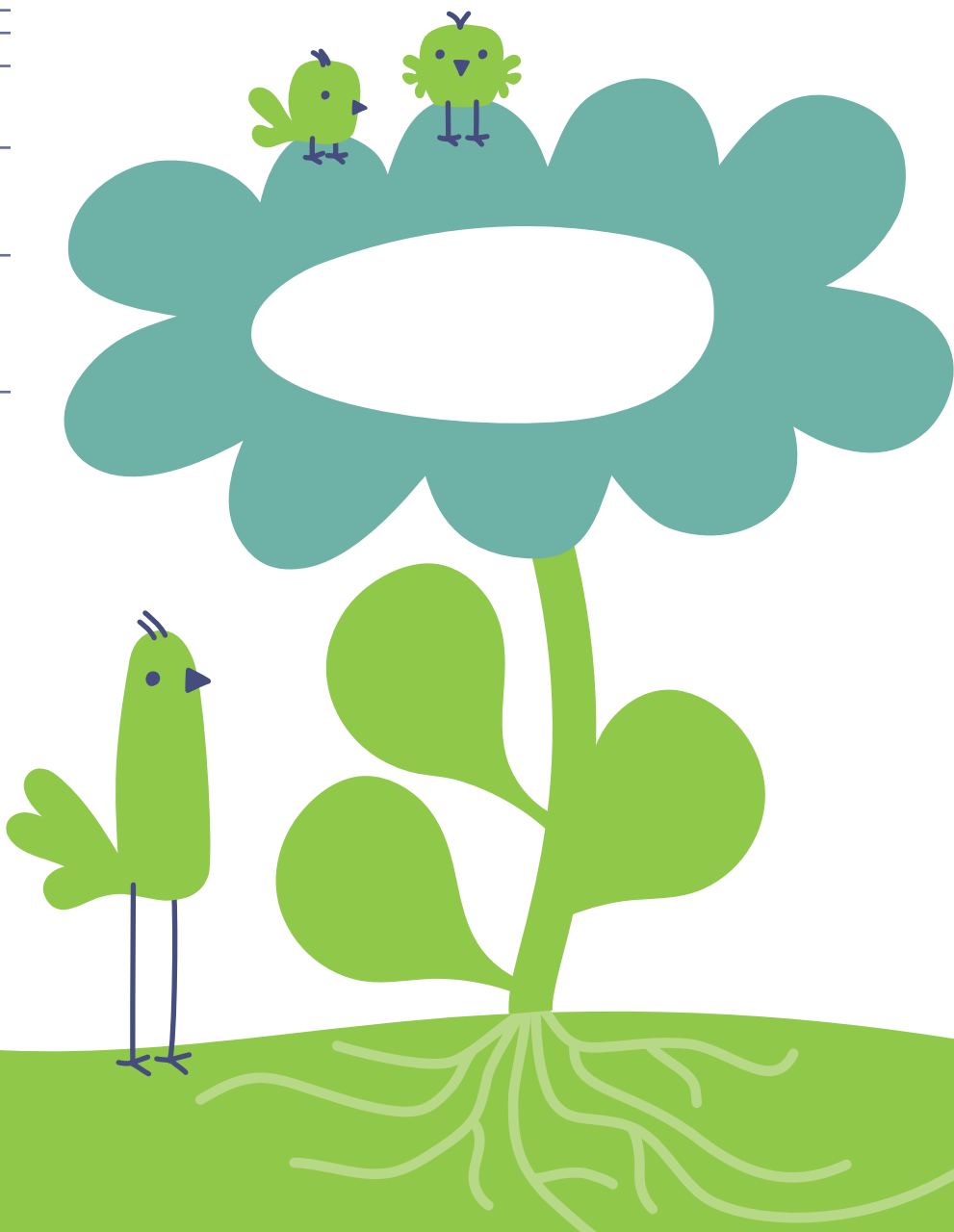
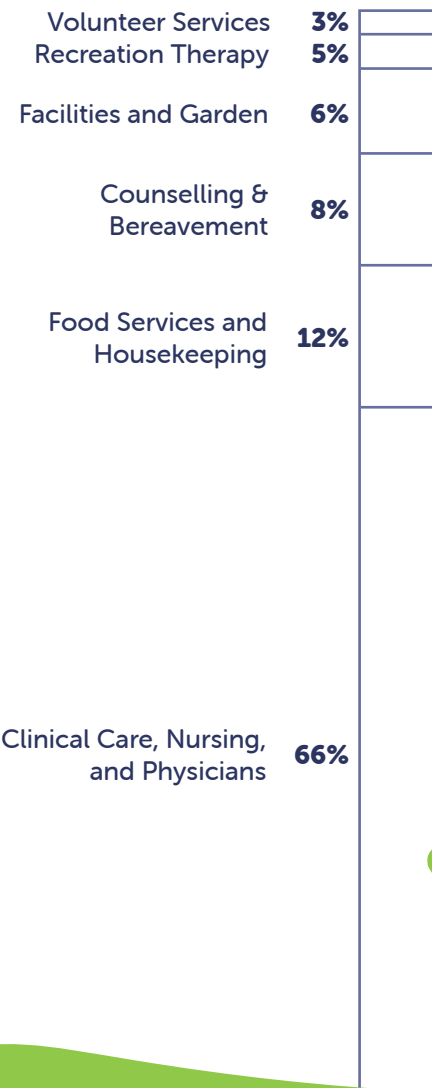
Canuck Place care is made possible with the generosity of donors like you. This compassionate community, alongside key grants and committed government funding, continues to provide the critical resources needed to deliver specialized pediatric palliative care to children and families across BC and the Yukon.



The Province of British Columbia, through the Ministry of Health partially supports direct patient care. Canuck Place raises close to 60% of the annual operating funds required to provide care. This important partnership is essential to the delivery of patient care.

- Province of BC
- Individual, Corporate, and Community
- CPCH Foundation and Other Income
- Annual Giving
- Galas and Other Events

# Investments in care for children and families



# The work of our team includes the following:

## CLINICAL CARE, NURSING, & PHYSICIANS

- Clinical, nursing, and physician care
- Medical respite care
- Pain & symptom management
- Medicine, medical supplies, pediatric medical equipment
- Individualized family care plans
- Enhanced Community Care Program
- 24-Hour Clinical Care Line available province-wide
- Quality & safety
- Knowledge, research, training & education

## COUNSELLING

- Grief, loss, and bereavement support
- Spiritual care
- Social work
- Music therapy
- Expressive arts
- Virtual care
- Family engagement and peer support

## RECREATION THERAPY

- Full-time recreation therapy
- School program
- Exciting age-appropriate excursions for children on the program, bereaved families, and siblings
- Equipped and accessible vehicles to transport children in wheelchairs
- Excellent on-site play and recreation facilities
- Snoezelen multi-sensory room

## FOOD SERVICES & HOUSEKEEPING

- Provide healthy, nutritious meals twice a day, 365 days a year, and ensure dietary needs are met for children and families staying in-hospice
- Ensure the hygienic needs of children and families are met with infection control measures
- Provide additional comfort and support to family members throughout their stay

## VOLUNTEER SERVICES

Training, management, and support of the following volunteer roles:

- Family volunteer
- Garden volunteer
- Housekeeping volunteer
- Kitchen volunteer
- Maintenance volunteer
- Reception volunteer
- Special event volunteer
- Volunteer driver

## FACILITIES & GARDEN

- Provide a home-like comfortable environment tailored to the needs of the program
- Fully wheelchair accessible
- Maintenance of gardens to provide peaceful surroundings for families



## Sustaining future care for children and families

The CPCH Foundation was established in 2000 to invest and safeguard funds for operating the CPCH Society. The investments in the CPCH Foundation ensure future generations of children living with complex conditions receive pediatric palliative care and bridge funding gaps and stability in current economic uncertainty. Annually, the Foundation makes financial

contributions to the Society for direct programs, emerging infrastructure needs, priority actions, key projects, and financial sustainability from challenges caused by fluctuations in revenue and economic impacts. Annually, the Board of Directors and leadership review the funding needs of the Society and balances them with the investment imperatives.

### Investment priorities:



#### GROWING CARE FOR YEARS TO COME

In 2024, we embarked on the first phase of a capital improvement focused on structural repairs and accessibility enhancements at Glen Brae. With the support of our donor community, phases two and three will occur in the years ahead to address essential repairs and replacements and to address care capacity.



#### UNLOCKING THE FULL POTENTIAL OF PEDIATRIC PALLIATIVE CARE

Canuck Place is investing in the pACP project, the Research Initiative, improved access to evidence-based bereavement services, and the Serious Illness Conversation Guide-Pediatrics® tool.



#### CARE FOR THE FUTURE

To improve patient safety and quality of care, Canuck Place is investing in the training and launch of the Electronic Medical Record system and the PPC Learning Management System to support increasing complexity in care.

Your generosity is the heart of our care. For 30 years, donors like you have made a profound difference, ensuring families are not alone on this journey.

Please see our full audited Foundation financial statements on our website at [canuckplace.org](https://canuckplace.org)



# We love how you give



**GENEROUS DONORS**  
providing support for  
care at Canuck Place



**COURAGE BUILDER  
MONTHLY DONORS**



**GIFTS MADE**  
to provide care for  
children and families  
at Canuck Place



**GENEROUS  
CORPORATE DONORS**



**RAISED THROUGH  
THE CONNECTORS  
PROGRAM**

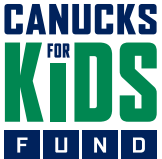
Canuck Place Connectors are  
the next generation of leaders,  
passionate about shared purpose  
and making a difference

# 30 years of lifting up children and families

It was 30 years ago that oncology nurse and Canuck Place founder, Brenda Eng, looked for community support through the Vancouver Canucks and Canucks for Kids Fund (CFKF). She found the ultimate teammate and a community of giving fans. The CFKF has granted over \$31M and these vital funds have ensured that children and families have received pediatric palliative care. The partnership goes beyond an annual grant. It is about supporting experiences, connections, and the building of memories for children experiencing short lives. Mascot Fin, the players, and Vancouver Canucks employees lift up the little and big hearts at Canuck Place.

Canuck Place also recognizes the significance and support of the Canucks Alumni Association/ Foundation who have been a key donor and warm friend throughout our growth of care.

“The Vancouver Canucks and Canucks Alumni stand with the children and families year after year,” says Denise Prall. “For our families and children, it means there is a whole hockey team behind them, lifting them to live their best life with the time they have.”



Roberto Luongo, Canucks Alumni with Soskay, Canuck Place Child



Canucks for Kids Fund board member and Canucks Alumni, Darcy Rota sharing time at Canuck Place





Dave Lede, Canuck Place Donor

## Ledcor's legacy of care

For over 19 years, Ledcor has played a vital role in the growth of Canuck Place. Through the funding and building of Canuck Place's second provincial hospice in 2014, Dave Lede House in Abbotsford, care has been expanded to serve more families in need. Together, Ledcor and the Dave Lede Family Foundation, have donated over \$9 million through individual donations, the Ledcor Cares employee giving program, sponsorships of both The Gift of Time and Gift of Love galas, and the Canuck Place Car Show Invitational.

"Over the last three decades, I've had the opportunity to visit Canuck Place's hospice locations, and I've seen first-hand the incredible work they do. Canuck Place provides support at the most difficult times, offering not just medical care, but a sense of comfort. For me, it's about making sure that kids at Canuck Place and their families know they are not alone in their journey. I can't think of any cause that's more important," says Dave Lede, Chairman and CEO, Ledcor Group of Companies.

## Nicola Wealth gives back

For over 11 years, Nicola Wealth has been a dedicated supporter of Canuck Place, championing care for children and families during life's most difficult moments. Through personal giving, Gift of Time gala sponsorship and Fund-a-Need support, corporate giving through their Nicola Wealth Gives Back program, and Canuck Place board leadership, John and Claire Nicola's generosity have touched every corner of our care.

"We are inspired by the extraordinary resilience of the children and families at Canuck Place," says John Nicola, Chairman and CEO Nicola Wealth. "Behind every heartbreaking story is a deep sense of love and courage. Canuck Place brings compassion, dignity, and world-class care to families in some of life's hardest moments—and that's something we're proud to support."

John and Claire Nicola, Canuck Place Donors



SUPPORTER SPOTLIGHTS



BC Bakery team: Dean McVeigh, Russ McKinlay, Dave Durand, and Dave Marshall

## Generous traditions at BC Bakery & Deli Foundation

Over three decades ago, a group of baking industry colleagues came together to help a friend. In 1992, the BC Bakery & Deli Foundation began an annual golf tournament that to date has raised over \$1.4 million.

Backed by leaders from grocery and bakery chains across BC, the tournament has become a tradition built on community, generosity, and purpose.

"Our dedication is never ending as is the need for pediatric palliative care. For over 34 years we have enjoyed the relationship we have with Canuck Place and our pledge going forward is stronger than ever," says longtime member Dave Durand.

## Honouring Elise: Wayne Duzita

Wayne Duzita has been a steadfast supporter and advocate of Canuck Place for 30 years, beginning with his role as co-founder of the original YVR for Kids Tournament and Dinner, created in honour of Elise Flagel. Deeply moved by Elise's journey and the care she received at Canuck Place, Wayne helped build a legacy that thrives today.

He chaired the YVR for Kids event for many years and continues to support it alongside Elise's parents, Brian and Audrey Flagel. Together, Wayne and Brian established an endowment fund that contributes funds annually to Canuck Place.

Reflecting on his connection, Wayne shares, "if you are accepted into the world of Canuck Place, it will change how you view daily challenges in your life. Empathy, compassion, and forgiveness become your foundation moving forward."

Wayne Duzita, Canuck Place Founding Donor and Arthur Griffiths, Canuck Place Founder







Tracie Seeley, Canuck Place Senior Corporate & Community Partnerships Officer and Lorraine Toor, Canuck Place Manager, Development with the YVR for Kids team

## Hole-in-one! - YVR for Kids

YVR for Kids began with a simple act of compassion amongst businesses affiliated with YVR Airport. The act was a hat passed around after a golf game to honour the memory of their co-founder's niece, Elise Flagel.

YVR for Kids, through their signature gala and golf tournament, have not only raised vital funds for Canuck Place but also awareness of pediatric palliative care. Their continued sponsorship of Gaia, Canuck Place's PADS accredited facilities dog, continues to bring comfort and joy to children and families on our program.

"There is nothing as fulfilling as giving back to your community," says Nigel Newsome, President YVR for Kids. "The need for assistance grows every year, and without it, Canuck Place would not be able to support more families."



### SUPPORTER SPOTLIGHTS

## TELUS: Lasting impact

TELUS has contributed more than \$2.5 million over the last three decades and over 2,000 employee volunteer hours to support care at Canuck Place. TELUS's longstanding commitment has taken many meaningful forms. Through Community Giving grants, event sponsorships, in-kind donations, and dedicated volunteerism, TELUS has made a lasting impact on Canuck Place's ability to deliver care where and when it's needed most.

"TELUS has had the privilege of partnering with Canuck Place and it's been nothing short of inspiring. Their dedication to providing specialized pediatric palliative care across BC and the Yukon offers a lifeline to families during their most challenging moments," says Patrick Barron, Vice President of Corporate Citizenship and Sustainability, TELUS.

The Telus team rolled up their sleeves for Telus Days of Giving



Denise de Jonge, Aprille Ferrario, and Suzanne Adams, Gift of Love co-chairs

## Leading with heart and purpose

The Canuck Place Gift of Love gala presented by MNP is a heartfelt celebration of compassion, community, and leadership. Our committee co-chairs: Aprille Ferrario, Denise de Jonge, and Suzanne Adams bring 26 years of combined volunteer service, and elevate the Abbotsford gala as a powerful platform for impact.

Aprille shares, "volunteering is how I live my values and show my children the power of giving back." Suzanne, with 11 years on the committee, reflects, "supporting children facing life-threatening illnesses has been a source of purpose and inspiration. It's like watching love unfold."

Thanks to their continued leadership, the support of MNP, and the community, the Gift of Love gala continues to raise vital funds for children and families at Canuck Place.

### SUPPORTER SPOTLIGHTS

## Golden gift of love from Lanka Jewels

Lanka Jewels has been a treasured supporter of Canuck Place, sponsoring the raffle at the Gift of Love gala presented by MNP every year since the first event in 2015.

Rooted in the communities of Mission and Abbotsford, Lanka Jewels' commitment to giving has been shaped by the generosity and kindness they feel blessed to receive from the community over the years.

"Giving to Canuck Place is important to us because it reflects the values we've built our business on—compassion, community, and care. Canuck Place provides more than medical care; they offer comfort, dignity, and strength to families facing unimaginable challenge," says Gavin Dabreo and Nathan Selvaraja, Directors, Lanka Jewels.

Quan Hung Lee, Pamela Anderson, Lisa Goldhawke Maheen Yasir, Lanka Jewels team







Sarah Robertson, Canuck Place Donor

## Sarah Robertson leaves a legacy

Sarah Robertson's commitment to Canuck Place began decades ago. In the early 1990s, while working at BC Cancer Agency, Sarah became connected to Brenda Eng's visionary work in creating Canuck Place.

In November 2024, Sarah responded to a Will Power email, including Canuck Place in her will—a gesture that echoes her journey of giving.

Sarah's story is also a journey of personal loss. In 1986, her infant son Alastair passed away, and later, her daughter Mairi faced a similar illness. Experiencing isolation and insufficient support during those times fuelled her desire to help support a comforting, home-like environment for families in crisis.

Today, Sarah also gives monthly to Canuck Place and her generosity continues to inspire lasting impact.

### SUPPORTER SPOTLIGHTS

## Canuck Place Connectors

Since launching in 2023, the dedicated group of Canuck Place Connectors has collectively donated and raised \$212,262, demonstrating their unwavering commitment to supporting Canuck Place care.

Connectors are an emerging group of philanthropists from Vancouver and the Fraser Valley bringing together business and community leaders committed to a dynamic, personalized approach to philanthropy.

Connectors pledge \$5,000 or more annually and take part in curated events and learning experiences that foster meaningful connections. As Tom Huang, Connectors Honorary Ambassador and Co-Founder of Tera Development, shares, "my goal is to amplify Canuck Place's impact by engaging with other community leaders and philanthropists who are eager to make a difference."

Claire Wang, Alfie Lam, Miguel Peralta and Tom Huang, Tera Development



Michelle Porter, Victoria Emslie, and Shalina Lawrence, Gift of Time co-chairs

## A gala celebrating the gift of finite time

Celebrating its 20th year, the Gift of Time presented by Nicola Wealth, has raised over \$20.6 million to provide care for children and families. The gala's success is driven by the passion and leadership of its co-chairs: Michelle Porter, Shalina Lawrence, and Victoria Emslie. Together, they guide the gala committee with heart and vision, inspiring generosity across the community.

For Victoria, the decision to support Canuck Place is deeply personal. "There are few causes that grip your heart quite like Canuck Place. It's not just what they do—it's how they do it. With compassion, dignity, and so much love."

Canuck Place is so grateful to the gala co-chairs, committee, sponsors, volunteers, and everyone who dedicated their time to make this event a success.

### SUPPORTER SPOTLIGHTS

## Artists collaboration from the heart

Vancouver artists Kari Kristensen and Tara Lee Bennett shared their talent and vision with the 2024 Gift of Time gala presented by Nicola Wealth. Their collaborative artwork shaped the visual identity bringing beauty, and meaning to a night dedicated to care and compassion.

Kari, a contemporary mural and linoleum print artist, and Tara, a paper sculptor, created a unique piece exclusively for the gala. Their donated artwork raised \$6,000 in support of Canuck Place care. The design was also featured in the Gift of Love gala, extending its impact even further.

"Thank you for inviting us to be part of such a truly meaningful night. Congratulations on 20 years and thank you for the important work you do," says Tara and Kari.

Kari Kristensen and Tara Lee Bennett, local artists





## PA Woodward Foundation equips care

The PA Woodward Foundation has supported healthcare in BC for close to 75 years. Since 1996, the foundation has made significant contributions towards medical equipment and supplies at Canuck Place with grants totalling over \$152,000.

Their long-standing support has helped Canuck Place upgrade our medical beds in recent years to provide the best comfort and care for children; and purchase medical room equipment to support optimal mobility for children and Canuck Place clinicians. We are grateful to the PA Woodward Foundation for providing these essential needs to support care for every Canuck Place child.



### SUPPORTER SPOTLIGHTS

## Chateau Fairmont Whistler

For 20 years, the Chateau Fairmont Whistler has been a valued partner of Canuck Place, contributing \$274,565 through generous in-kind donations and auctions.

Their signature Trees of Hope Art Auction is an inspiring annual event that brings local artists through Mountain Galleries to paint in the hotel lobby with finished artwork displayed and auctioned online in support of Canuck Place care. They also provide generous gifts-in-kind through donating room stays for Canuck Place events and prize raffles.

“For us, giving is not just a financial contribution, it’s an act of solidarity and compassion. By supporting Canuck Place, we’re contributing to a place that offers comfort, care, and dignity to families going through incredibly difficult times,” says Katia Barton, Conference Services & Special Events Manager.

The team at Chateau Fairmont Whistler with Erin Frizzell, Canuck Place Development Officer, Community & Corporate Partnerships



## Arnie Thompson: Promise keeper

Since 1996, Arnie Thompson has supported Canuck Place, driven by a heartfelt promise to his late wife who passed away from cancer. “She told me, ‘you have to give from your heart.’” Inspired by her compassion and a Canucks playoff night fundraiser, he began giving and never stopped.

Now a Courage Builder Monthly Donor, Arnie continues to give what he can. “It’s not about me,” he says. “It’s about the kids and the parents. They go through tough times, and I want to help.”

What inspires him most is the joy he sees in the children. “They’re happy kids, even though they’re going through so much. That’s because of Canuck Place.”

Arnie’s story is a powerful reminder that giving—no matter the amount—can come from a place of love, and make a lasting difference.



### SUPPORTER SPOTLIGHTS

## Gotro Family Foundation

The Gotro Family Foundation, led by Paul and Jean Gotro, has been a dedicated supporter of Canuck Place, donating \$10,000 every July in memory of their beloved grandson, Kai, who passed away in November of 2016.

Their connection to Canuck Place spans over eight years, during which they experienced firsthand the warmth, compassion, and holistic support that defines our hospice. For the Gotros, Canuck Place was more than a care facility—it was a home that embraced their entire family, offering respite, understanding, and continued support even after Kai’s passing. Their annual gift is both a tribute to Kai and a way to ensure other families receive the same comfort and care.

What inspires them most is the sense of community at Canuck Place, from shared meals and quiet conversations, to the kindness of every staff member and volunteer. “It is our pleasure to remain a part of a very special community,” shares Paul and Jean.

Kai, Canuck Place Child







Terry Menz, Canuck Place cook

## The gift of nutrition

Since 2012, BC Egg has proudly supported Canuck Place with fresh, locally produced eggs donated to the hospice kitchens. This meaningful partnership helps ensure children and families facing the most challenging times are nourished with healthy meals and comforting treats.

“At BC Egg, we believe that good food creates good memories,” says Leanne Witherly, Communications Assistant. “When every moment matters, something as simple as a warm cookie or a nutritious breakfast can bring comfort and connection.”

### SUPPORTER SPOTLIGHTS

## Stong's Market: Grocer with heart!

Stong's Market has been a fixture in Vancouver's communities for over 90 years and have been a valued partner to Canuck Place.

Since 2017, Stong's has raised over \$115,000 through their Thanksgiving Round-Up fundraiser. Since 1993, Stong's has provided in-kind donations, gift cards, support for events throughout the year, and employee contributions.

“We recognize the unique and special support Canuck Place provides for families across BC. Giving short lives the gift of great days is a beautiful thing,” shares Tamsin Carling, Marketing Director at Stong's Market.

With every meal supported through their fundraising, Stong's helps nourish Canuck Place families for years to come.

The team at Stong's Market



## 50/50 + prize draw



Sarah Jesshope, Canuck Place Fall 50/50 winner and Clayton Whitt, Canuck Place Manager, Annual Giving Programs

The Canuck Place 50/50 is built on the tremendous support of participants, and in fall 2024, we launched the 50/50 + Prize Draw. Eight prize packages were added

alongside the traditional jackpot, ranging from an iPad and a Sony Bravia 65-inch television, to trips to Whistler, Squamish, Sun Peaks, and more!

Canuck Place is grateful to presenting sponsor RE/MAX Agents of the Lower Mainland and generous prize donors including Fairmont Chateau Whistler, Sony, TELUS, Best Buy, Sandman Hotel Abbotsford Airport, Sandman Squamish Hotel & Suites, and Park 'N Fly YVR.

In 2024–25, the Canuck Place 50/50 raised \$1,399,930 in revenue. Over 20,000 generous ticket purchasers from 396 communities across BC supported Canuck Place care and gained a thrilling chance to win half the 50/50 jackpot or a prize.

### SUPPORTER SPOTLIGHTS

## Teaming up with Compugen

For 12 years, Compugen has been a dedicated supporter of Canuck Place, contributing more than \$92,148 through fundraising, volunteering in the garden, and meaningful community engagement. From silent auctions to transforming their Amazing Race-style team event into a fundraiser, the organization has consistently found creative ways to give back.

Their connection to Canuck Place is both personal and purposeful. “When we put it to a vote in our office, the decision to support Canuck Place was unanimous,” shares Compugen. “It wasn't just about choosing a cause—it was about aligning with something that truly matters.”

Compugen's ongoing support reflects a commitment to giving back in a way that's tangible, heartfelt, and deeply meaningful.

The Compugen team rallied for their annual Amazing Race fundraiser, with Lorraine Toor, Canuck Place Manager, Development





# Canuck Place Society Board of Directors

- Robert Coard (Chair)
- Jill Donaldson (Vice Chair)
- Barry Macdonald (Vice Chair & Secretary)
- Tom Webster (Treasurer)
- Barbra Mohan (Family Advisory Council Liaison)
- Teresa Budd
- Linda Cheung
- Markus Delves
- Dr. Randeep Gill
- Bob Smart
- Tom Shepansky
- Suzanne Steenburgh
- Tom Wong

# Canuck Place Foundation

- Robert Coard (Chair)
- Jill Donaldson (Vice Chair)
- Barry Macdonald (Secretary)
- Tom Webster (Treasurer)
- Barbra Mohan
- Suzanne Steenburgh

We want every interaction you have with us—whether that is in person, by telephone, email, letter, or via social media—to be a positive experience, but we know we won’t always get it right. If this is the case, please tell us. We take complaints seriously and welcome compliments and feedback so we can continuously grow and learn and improve from them. Get in contact with us [hello@canuckplace.org](mailto:hello@canuckplace.org) and let us know how we are doing.



**At Canuck Place we understand that uniqueness is powerful. We hold each other accountable for an inclusive environment where employees feel empowered to share their experiences and ideas and know that they belong. We believe diversity drives innovation and the best pediatric palliative care for children and their families therefore we welcome that every person brings an individual perspective and experience to advance our mission.**



**At Canuck Place, we have more work to do to advance diversity and inclusion and we are building a culture where difference is valued. We have a commitment to inclusion across gender identity or expression, sexual orientation, religion, ethnicity, age, neurodiversity, and disability status, to ensure our team members are empowered to bring their full, authentic selves to work.**



Canuck Place Staff Day 2024 themed 'Camp Canuck Place'





We are  
grateful  
for you



[canuckplace.org](https://canuckplace.org)

Canuck Place Children's Hospice is a non-profit organization  
registered in Canada under the number 13386 7523 RR0001.  
For more information on our privacy policy, visit [canuckplace.org/privacy](https://canuckplace.org/privacy)

**Canuck Place is grateful to partner with BP Media for this print  
publication—thank you for your dedication and generosity.**